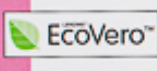




BOOK

S/S 2023

NEWMILL is certified



Via Palermo 41 - 50013 Montemurlo (PO) - Italy  
Tel. +39 0574 68161 - [newmill@newmill.it](mailto:newmill@newmill.it)

NEW MILL

Spring  
Summer  
2023

NEW MILL  
an italian family yarn



# Green by NEW MILL

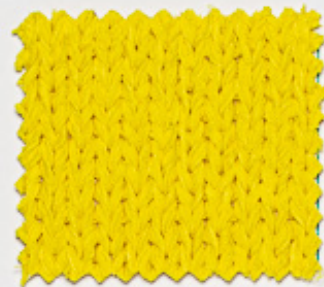


ON REQUEST  
61% ORGANIC CO  
39% PA


① Nastrino

Nm: 3.200  
BCI 61% COTONE BCI  
39% FIBRA POLIAMMIDICA



ON REQUEST  
66% ORGANIC CO  
34% PA


① Nastro

Nm: 1.900  
BCI 66% COTONE BCI  
34% FIBRA POLIAMMIDICA



ON REQUEST  
69% ORGANIC CO  
31% PA


① Nastrone

Nm: 1.300  
BCI 69% COTONE BCI  
31% FIBRA POLIAMMIDICA



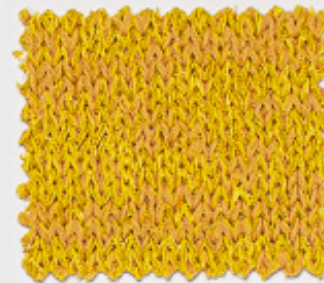
ON REQUEST  
80% ORGANIC CO  
20% PA


② Grain

Nm: 2.100  
BCI 80% COTONE BCI  
20% F. POLIAMMIDICA

# Green by NEW MILL

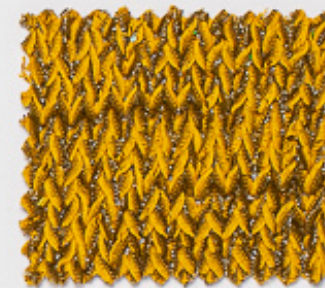


ON REQUEST  
36% ORGANIC CO  
64% PA


③ Brinato

Nm: 3.300  
36% COTONE BCI - 64% FIBRA POLIAMMIDICA



ON REQUEST  
55% ORGANIC CO  
37% PA - 8% PL


④ Zeus

Nm: 2.250  
BCI 55% COTONE BCI - 37% FIBRA POLIAMMIDICA  
8% POLIESTERE METALLIZZATO



ON REQUEST  
42% ORGANIC CO  
24% CO - 34% LI


⑤ Material

Nm: 8.100  
66% COTONE BCI - 34% LINO



# Green by NEW MILL



ON REQUEST  
87% ORGANIC CO  
13% PA



⑥ Farfalla

Nm. 55.000  
BCI 87% COTONE BCI  
13% FIBRA POLIAMMIDICA

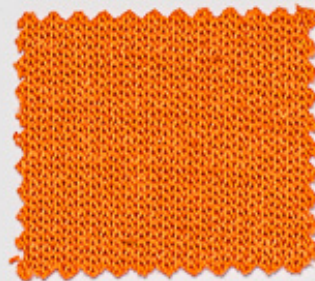


ON REQUEST  
85% ORGANIC CO  
15% PA



⑥ Carezza

Nm. 33.500  
BCI 85% COTONE BCI  
15% FIBRA POLIAMMIDICA

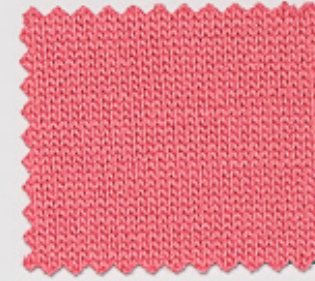


ON REQUEST  
74% ORGANIC CO  
26% PA



⑨ Gioia

Nm. 5.000  
BCI 74% COTONE BCI  
26% FIBRA POLIAMMIDICA



ON REQUEST  
100% BCI COTTON



⑩ Lace

Nm. 6.700  
100% COTONE MERCERIZZATO



BCI  
BetterCotton.org

Global Recycled  
Standard  
Certified by CIRA  
No. certificate GRS 2019-008

⑦ Greta

Nm. 5.600  
40% COTONE BCI - 60% COTONE GRS



ON REQUEST  
95% ORGANIC CO  
5% PA



⑪ Kiron

Nm. 3.300  
95% COTONE BCI - 5% FIBRA POLIAMMIDICA

BCI



ON REQUEST  
57% ORGANIC CO  
43% PA



⑧ Organic

Nm. 14.300  
BCI 57% COTONE BCI  
43% FIBRA POLIAMMIDICA



ON REQUEST  
72% ORGANIC CO  
28% PA



⑧ Allegro

Nm. 5.300  
BCI 72% COTONE BCI  
28% FIBRA POLIAMMIDICA



ON REQUEST  
58% ORGANIC CO  
42% PA



⑪ Borg

Nm. 3.900  
BCI 58% COTONE BCI  
42% FIBRA POLIAMMIDICA



ON REQUEST  
64% ORGANIC CO  
36% PA



⑫ Look

Nm. 5.000  
BCI 64% COTONE BCI  
36% F. POLIAMMIDICA

## Green by NEW MILL



13 Tunix

Nm: 34.000

83% VISCOSA ENKA FSC - 17% PBT



13 Cedrino

Nm: 25.000

88% VISCOSA ENKA FSC - 12% PBT



13 Elegant

Nm: 29.600

71% VISCOSA ENKA FSC - 29% F. POLIAMMIDICA



14 Abel

Nm: 22.500

90% VISCOSA FSC  
10% F. POLIAMMIDICA



14 Abel Lux

Nm: 20.500

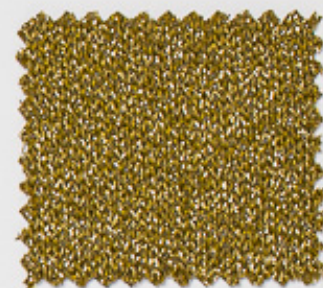
82% VISCOSA FSC  
10% F. POLIAMMIDICA  
8% F. METALLIZZATA



15 Party

Nm: 35.000

70% VISCOSA FSC - 16% F. POLIAMMIDICA  
14% F. METALLIZZATA



15 Part-one

Nm: 7.000

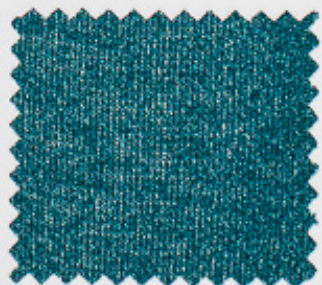
70% VISCOSA FSC - 16% F. POLIAMMIDICA  
14% F. METALLIZZATA



16 Queen

Nm: 1.650

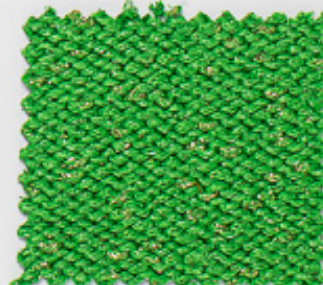
85% VISCOSA FSC - 11% POLIESTERE METALLIZZATO  
4% F. POLIAMMIDICA



17 Sting

Nm: 40.250

80% VISCOSA FSC  
20% POLIESTERE

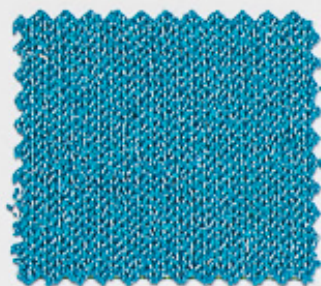


18 Magnus

Nm: 2.350

85% VISCOSA FSC - 10% POLIESTERE  
3% F. METALLIZZATA - 2% FIBRA POLIAMMIDICA

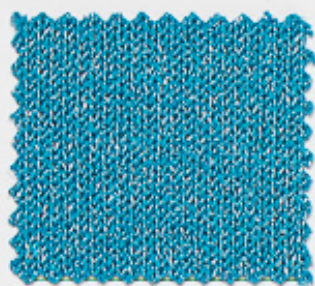
## Green by NEW MILL



### 19 Hiphop

Nm: 4.700

55% COTONE RICICLATO GRS  
45% POLIESTERE



### 19 Hiphop Lux

Nm: 4.600

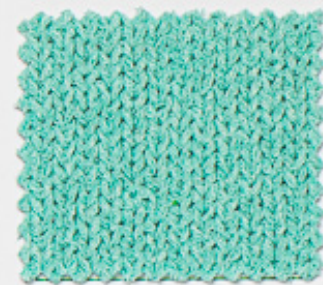
54% COTONE RICICLATO GRS  
42% POLIESTERE  
2% F. METALLIZZATA - 2% F. POLIAMMIDICA



### 21 Botolino

Nm: 18.000

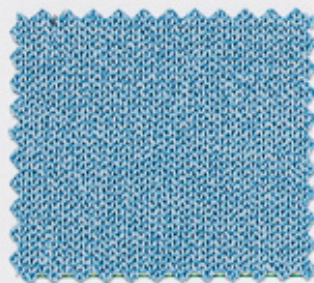
31% POLIESTERE RICICLATO GRS  
69% LINO



### 22 Greve

Nm: 2.800

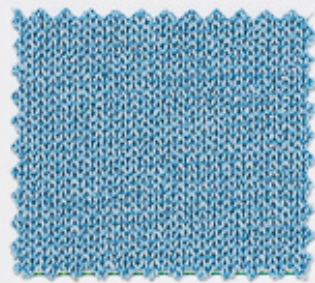
43% COTONE RICICLATO GRS  
43% POLIESTERE  
14% FIBRA POLIAMMIDICA



### 20 Yoga

Nm: 7.000

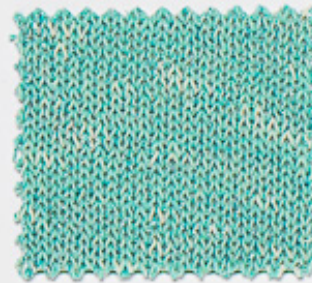
38% COTONE RICICLATO GRS  
62% POLIESTERE



### 20 Pilates

Nm: 6.500

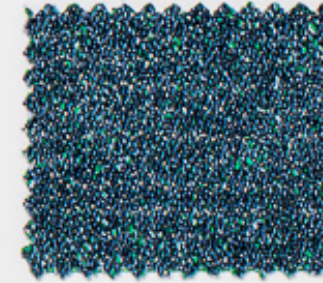
35% COTONE RICICLATO GRS  
62% POLIESTERE  
3% FIBRA POLIAMMIDICA



### 23 Burla

Nm: 5.000

32% COTONE RICICLATO GRS  
16% COTONE - 32% F. POLIACRILICA  
3% F. METALLIZZATA  
17% F. POLIAMMIDICA



### 24 King

Nm: 3.900

45% COTONE RICICLATO GRS  
51% POLIESTERE  
2% FIBRA POLIAMMIDICA  
2% F. METALLIZZATA

## Green by NEW MILL

## Fashion by NEW MILL



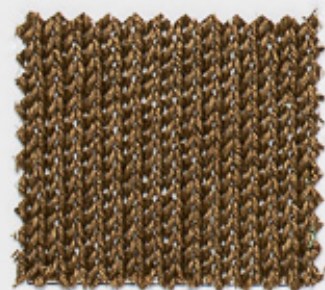
25 Ganzolino

Nm. 23.500  
89% LINO - 11% FIBRA POLIAMMIDICA



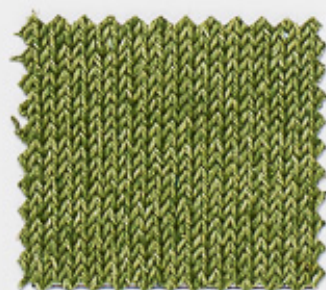
26 Mais

NM. 2.200  
77% COTONE - 23% LINO



27 Linone 3.300  
Linone 6.600

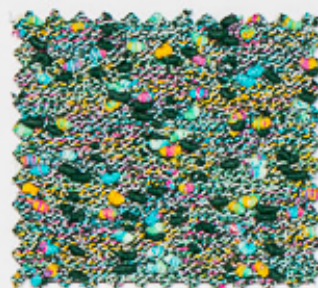
Nm. 3.300 - Nm. 6.600  
100% LINO



28 Screziato 3.300  
Screziato 6.600

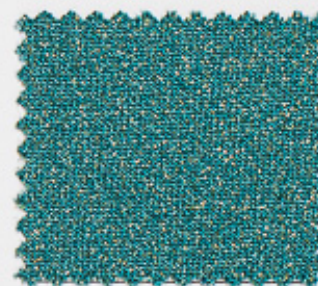
Nm. 3.300 - Nm. 6.600  
100% LINO

## Fashion by NEW MILL



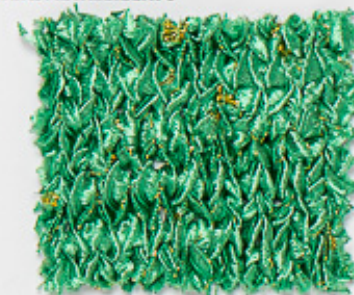
29 Cocoon

NM: 9.000  
70% COTONE - 30% FIBRA POLIAMMIDICA



30 Glaciale

NM: 24.000  
89% F. POLIAMMIDICA  
11% POLIESTERE METALLIZZATO

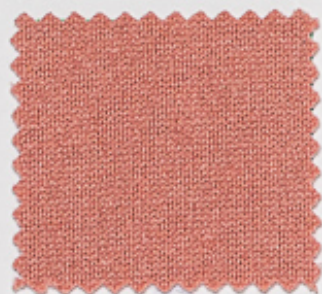


30 Oro

NM: 1.700  
97% FIBRA POLIAMMIDICA  
3% FIBRA METALLIZZATA

# Green by NEW MILL

SUITABLE FOR ALL SEASONS

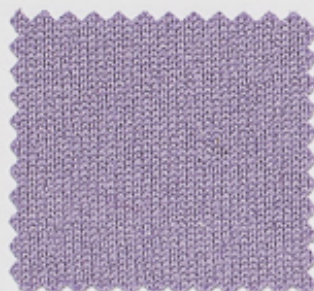


Green 100

Nm: 2/26.000

50% CASHMERE RICICLATO GRS - 50% CASHMERE

STOCK SERVICE



Green Silk

Nm: 2/26.000

50% CASHMERE RICICLATO GRS - 50% SETA



ON REQUEST  
30% WS GRS  
40% ORGANIC CO  
30% PA GRS



0 Agathe

Nm.1/18.500

30% CASHMERE - 40% COTONE  
30% F. POLIAMMIDICA

# Green by NEW MILL

SUITABLE FOR ALL SEASONS



ON REQUEST  
76% WV RWS  
19% PA - 5% PBT



Certified by IFA  
RWS 001-00000

0 Space Comfort

Nm.19.200

76% LANA MERINO EXTRAFINE 110s  
19% FIBRA POLIAMMIDICA - 5% PBT



ON REQUEST  
5% WS GRS - 16% WO GRS  
29% PA GRS - 8% WO  
38% VI - 4% PBT

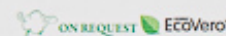


Certified by IFA  
No certificate GRS 2019-049

0 Leal Comfort

Nm.17.300

5% CASHMERE - 24% LANA - 29% F. POLIAMMIDICA  
38% VISCOSA - 4% PBT



25% WO RWS - 35% VIECOVERO  
30% ORGANIC CO - 10% PA GRS



0 Domingo 2

Nm.1/14.500

25% LANA - 35% VISCOSA - 30% COTONE  
10% F. POLIAMMIDICA